

RealLine Pathogen Diagnostic Kits

for Real-Time PCR



SEXUALLY TRANSMITTED INFECTIONS



HUMAN PAPILLOMA VIRUS

HUMAN HERPES VIRUS

TICK-BORNE DISEASES

... AND OTHERS

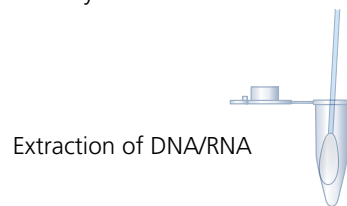
**New
Edition
2022**

 **BIORON**
diagnostics



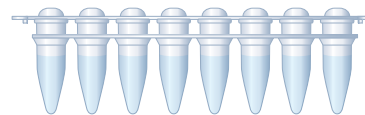
Special Characteristics

- Lyophilized Master Mixes
- Transportation at room temperature (<10 days) has been validated
- Ready for use
- Same protocols for PCR and RT-PCR
- Different tests can be performed simultaneously
- Positive Controls included
- With Internal Control system



Fast and easy

Str-format Kits



Real-Time PCR



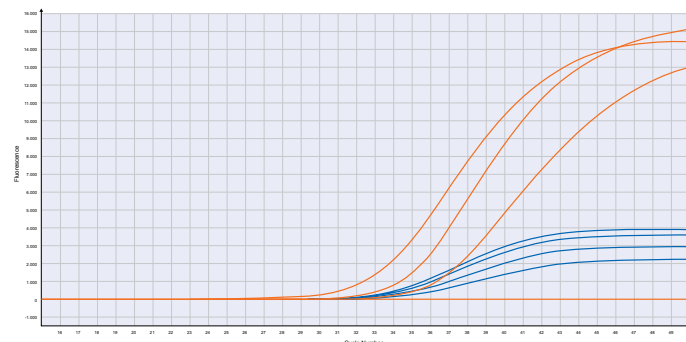
CFX
(BioRad)

RealLine Cycler 48
(BIORON)

RealLine Cycler 96
(BIORON)

Quantstudio 5
(Thermo Fisher)

Result



Open System

- Usable with various Real-Time cyclers



Sexually Transmitted Infections

Single Kits	Tests	REF
RealLine Chlamydia trachomatis	96	VBD1998
RealLine Neisseria gonorrhoeae	96	VBD4498
RealLine Mycoplasma hominis	96	VBD4398
RealLine Mycoplasma genitalium	96	VBD4396
RealLine Ureaplasma urealyticum	96	VBD2298
RealLine Trichomonas vaginalis	96	VBD2098
RealLine Gardnerella vaginalis	96	VBD4598
RealLine Candida albicans	96	VBD4698
RealLine Treponema pallidum	48	VBD1898
Detection in ROX channel, Internal Control in FAM channel		

Multiplex Kits	Tests	REF
RealLine Chlamydia trachomatis / Neisseria gonorrhoeae	96	VBD0457
RealLine Chlamydia trachomatis / Mycoplasma genitalium	96	VBD0490
RealLine Chlamydia trachomatis / Ureaplasma urealyticum	96	VBD0492
RealLine Mycoplasma hominis / Mycoplasma genitalium	96	VBD0494
RealLine Ureaplasma urealyticum / Ureaplasma parvum	96	VBD2294
RealLine Trichomonas vaginalis / Gardnerella vaginalis	96	VBD0477
RealLine Trichomonas vaginalis / Neisseria gonorrhoeae	96	VBD0496
RealLine Candida albicans / Gardnerella vaginalis	96	VBD0444
Detection in different channels (HEX and ROX), Internal Control in FAM channel		



Human Papilloma Virus

High Carcinogenic Risk Types	Tests	REF
RealLine HPV 16 / 18	96	96
RealLine HPV HCR Screen	96	96
Detection of the HPV types 16, 18, 31, 33, 35, 39, 45, 51, 52, 56, 58, 59, 66 and 68 in FAM – HEX – ROX channels		
RealLine HPV HCR Genotype	96	96
Differentiation of the HPV types 16, 18, 31, 33, 35, 39, 45, 51, 52, 56, 58 and 59 in FAM – HEX – ROX – Cy5 channels		

Low Carcinogenic Risk Types	Tests	REF
RealLine HPV 6 / 11	96	VBD8475

Tick Borne Infections

	Tests	REF
RealLine TBEV (FSME)	48	VBD1198
RealLine Borrelia burgdorferi s.l.	48	VBD1498
RealLine Anaplasma / Ehrlichia	48	VBD5398





RealLine Pathogen Extraction Kits

	Clinical Material	MagicMag Rack	Nucleic Acid	REF Tests
RealLine DNA Express	epithelial cell specimen, urine, sperm	–	DNA	VBC8899 100
RealLine DNA Extraction 3	epithelial cell specimen, urine, sperm, blood serum, plasma	+	DNA	VBC8889 96
RealLine Extraction 100	epithelial cell specimen, liquor, biopsy material, blood serum, plasma, whole blood, ticks, urine, sperm, stool	+	DNA and RNA	VBC8896 48
RealLine Extraction UniMag semi-automated extraction for King Fisher, Magnetite and Allsheng Pure-96	Blood serum, leukocyte blood fraction, biopsy material, liquor, urine, epithelial cells specimens, stool (faeces), tick suspensions, water samples		DNA and RNA	VBC8883

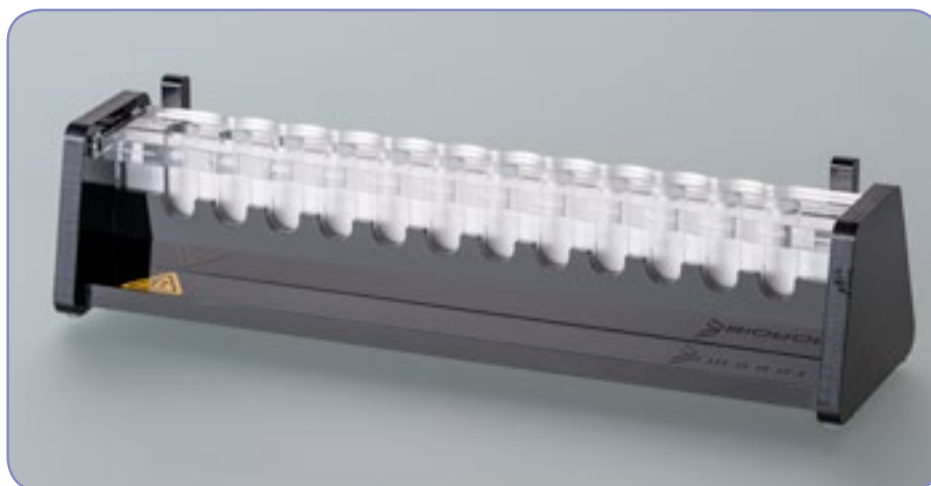
The Internal Control is included in the Extraction Kits, but also separately available.

Accessories

	REF Tests
RealLine Internal Control	VBC8881 250
MagicMag Rack for 12 tubes	BI87000

Unique – available from BIORON only:

The tubes can be kept inside the rack for the whole purifying process due to the built-in tilt mechanism.





Real-Time PCR Cycler

	Block Size	Number of Channels	REF
RealLine Cycler 48-4	48 wells	4	910484
RealLine Cycler 48-5	48 wells	5	910485
RealLine Cycler 96-4	96 wells	4	910964
RealLine Cycler 96-5	96 wells	5	910965



Our RealLine Pathogen Detection Kits in Str-format are designed for these cyclers. Just open the tube, add the sample and run the PCR! The block can be opened manually or by software. RealLine Cyclers are open for all kits and compatible to generally available plates and tubes.

Terms and conditions of BIORON Diagnostics GmbH

- International: The General Conditions of Export
- Germany: Allgemeine Geschäfts- und Lieferbedingungen

Available at www.bioron.de

Find our products in your country

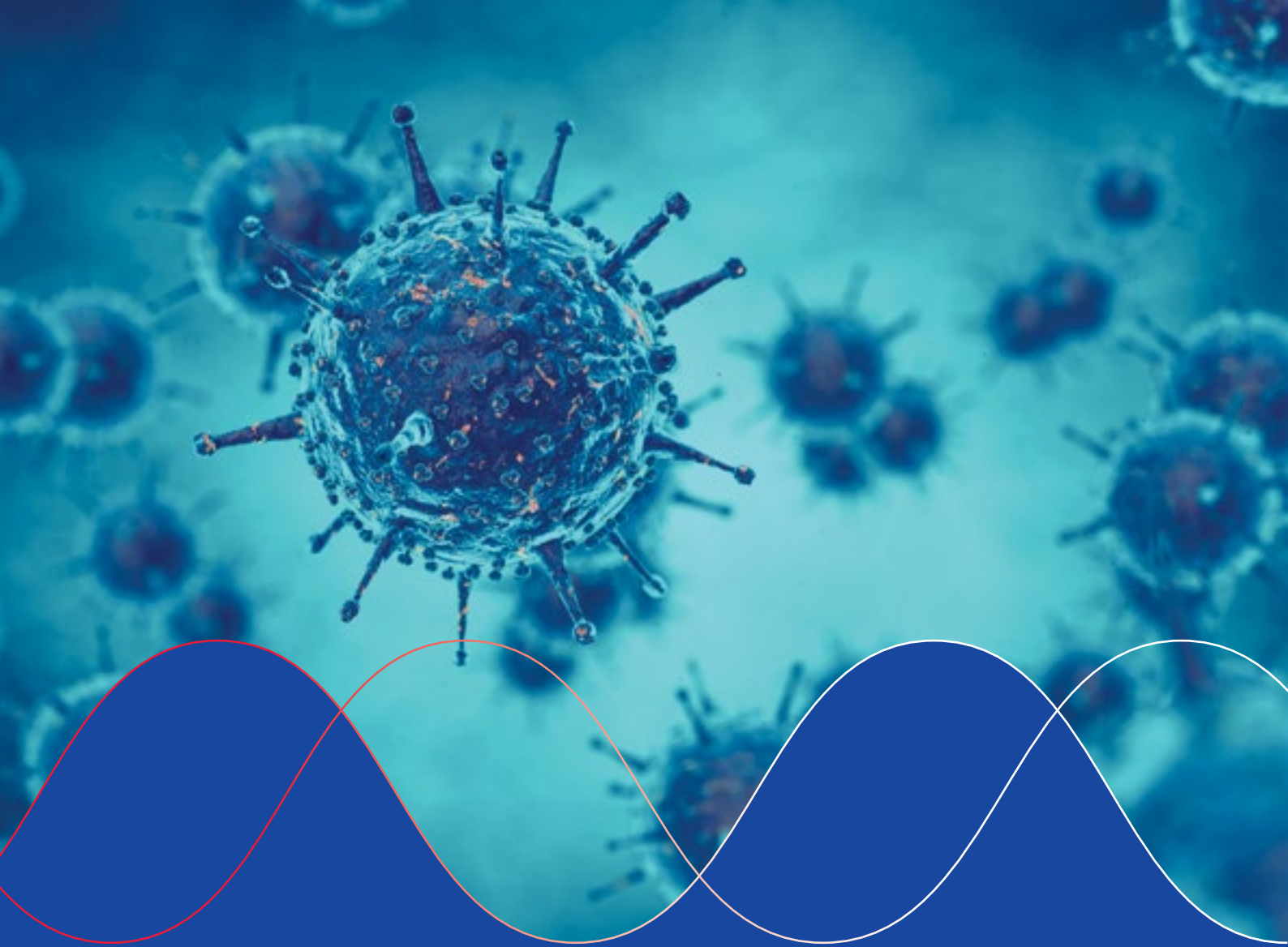
BIORON Diagnostics is represented in various countries worldwide.

Please view <https://www.bioron.de/bioron-distribution/>

Imprint

BIORON Diagnostics GmbH
 In den Rauhweiden 20
 67354 Römerberg, Germany
info@bioron.de
www.bioron.de

Legal form: Limited Liability Company
 Managing Director: Barbara Hassib
 Commercial Register: AG Ludwigshafen HRB 02298
 VAT ID: DE 274 094 961



BIORON Diagnostics GmbH is manufacturer and worldwide acting trader of diagnostic products.

RealLine kits are based on

- the most advanced variants of PCR
- fast and sensitive technique

BIORON Diagnostics' kits fulfil highest quality and health standards.

Our customers value us for our individual concern and prompt support.

Our QM system has been certified by



BIORON Diagnostics GmbH

In den Rauhweiden 20
67354 Römerberg
Germany

Phone +49 6232 29844-0
Fax +49 6232 29844-29
info@bion.de

www.bion.de