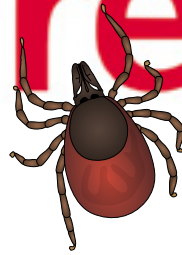


Borrelia burgdorferi s.l.

Borrelia



BIORON Diagnostics offers Detection kits for Tick-Borne diseases such as **Tick Borne Encephalitis (FSME)**, **Borreliosis**, **Anaplasmosis** and **Ehrlichiosis**.

Advantages for the RealLine Tick borne Infection kits:

- Same Extraction for RNA and DNA.
- Same Extraction for all clinical samples and for ticks.
- PCR procedure and run for Borrelia and TBEV can be done simultaneously.
- High sensitivity for the human pathogen subspecies of *Borrelia burgdorferi* s.l. complex

 **BIORON**
diagnostics



Tick borne Infection kits

Product	Str-format	Fla-format	Tests
RealLine Borrelia burgdorferi s.l.	VBD1498		48
		VBD1499	50
RealLine TBEV (FSME)	VBD1198		48
		VBD1199	50
RealLine Anaplasma / Ehrlichia	VBD5398		48
		VBD5399	50

The RealLine Borrelia burgdorferi s.l. kit detects:

B. burgdorferi sensu stricto, *B. afzelii*, *B. garinii*, *B. spielmanii*, *B. lusitaniae*, *B. valaisiana*, *B. bisettii*, *B. bavariensis*.

The RealLine Anaplasma / Ehrlichia kit detects:

Anaplasma phagocytophilum, and *Ehrlichia chaffeensis* and *E. muris* in two different channels.

We recommend to use the following extraction:

Product	Clinical Material	MagicMag Rack	Nucleic Acid	Ref .No
RealLine DNA Extraction 2	epithelial cell specimen, urine, liquor, biopsy material, blood serum, plasma	+	DNA	VBC8897
RealLine DNA Extraction 3	epithelial cell specimen, urine, sperm, blood serum, plasma	+	DNA	VBC8889
RealLine Extraction 100	epithelial cell specimen, liquor, biopsy material, blood serum, plasma, whole blood, ticks, urine, sperm, stool	+	DNA and RNA	VBC8896

Internal Control included in the Extraction Kits, but also available separately