

# RealLine Pathogen Diagnostic Kits

for Real-Time PCR



SEXUALLY TRANSMITTED INFECTIONS

HUMAN PAPILLOMA VIRUS

HUMAN HERPES VIRUS

TICK-BORNE DISEASES

... AND OTHERS

**New  
Edition  
2020**

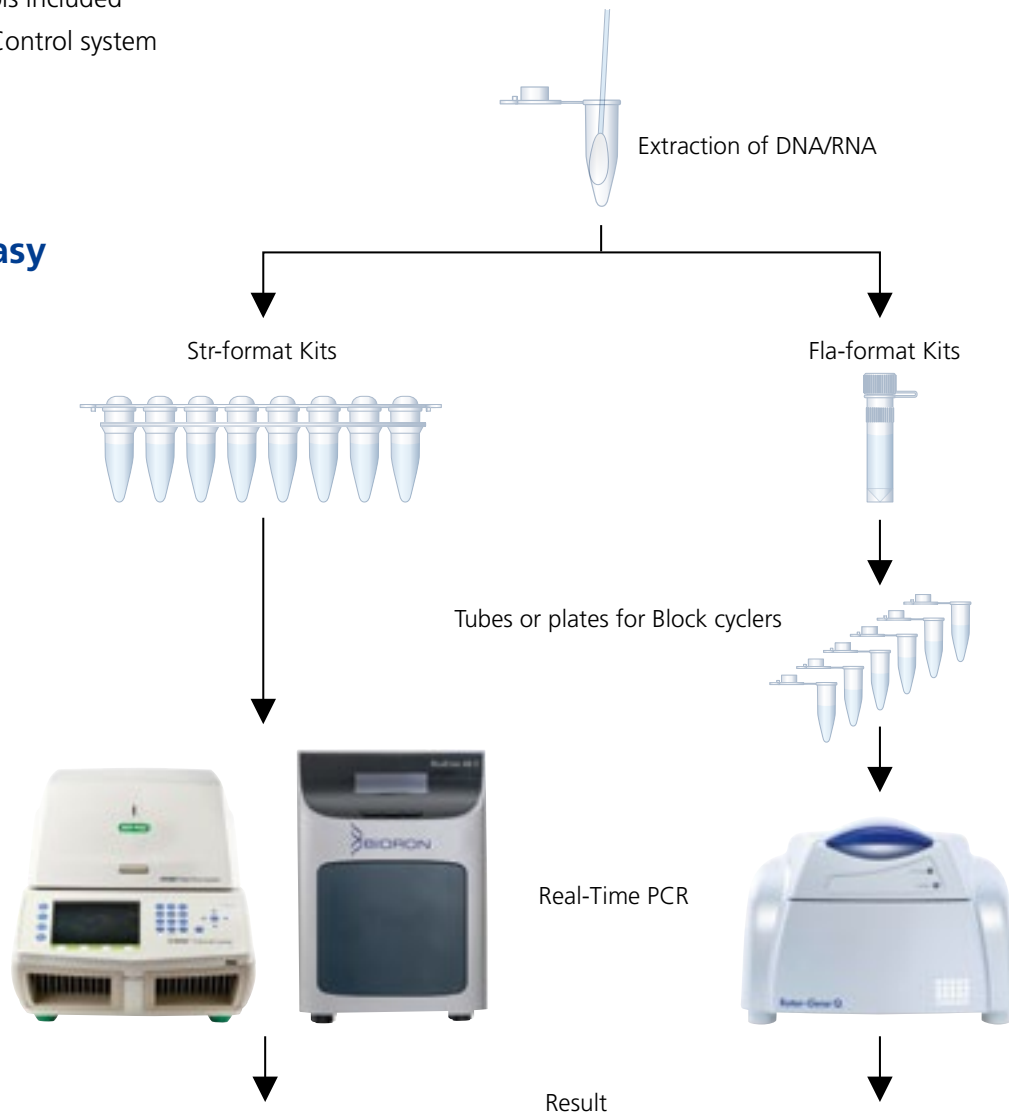
 **BIORON**  
diagnostics



## Special Characteristics

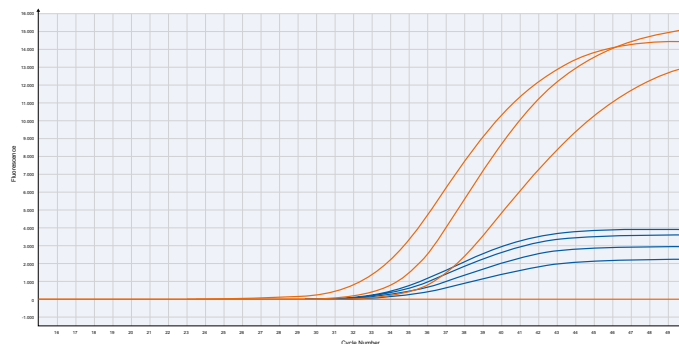
- Lyophilized Master Mixes
- Transportation at room temperature (<10 days) has been validated
- Ready for use
- Same protocols for PCR and RT-PCR
- Different tests can be performed simultaneously
- Positive Controls included
- With Internal Control system
- CE-IVD

## Fast and easy



## Open System

- Usable with various Real-Time cyclers





## Sexually Transmitted Infections

Single Kits	Str-format Tests	Fla-format Tests
RealLine Chlamydia trachomatis	VBD1998 96	VBD1996 100
RealLine Neisseria gonorrhoeae	VBD4498 96	VBD4496 100
RealLine Mycoplasma hominis	VBD4398 96	VBD4393 100
RealLine Mycoplasma genitalium	VBD4396 96	VBD4394 100
RealLine Ureaplasma urealyticum	VBD2298 96	VBD2296 100
RealLine Trichomonas vaginalis	VBD2098 96	VBD2096 100
RealLine Gardnerella vaginalis	VBD4598 96	VBD4596 100
RealLine Candida albicans	VBD4698 96	VBD4696 100
RealLine Treponema pallidum	VBD1898 48	VBD1896 50
Detection in ROX channel, Internal Control in FAM channel		

Multiplex Kits	Str-format Tests	Fla-format Tests
RealLine Chlamydia trachomatis / Neisseria gonorrhoeae	VBD0457 96	VBD0458 100
RealLine Chlamydia trachomatis / Mycoplasma genitalium	VBD0490 96	VBD0487 100
RealLine Chlamydia trachomatis / Ureaplasma urealyticum	VBD0492 96	VBD0491 100
RealLine Mycoplasma hominis / Mycoplasma genitalium	VBD0494 96	VBD0493 100
RealLine Ureaplasma urealyticum / Ureaplasma parvum	VBD2294 96	VBD2295 100
RealLine Trichomonas vaginalis / Gardnerella vaginalis	VBD0477 96	VBD0478 100
RealLine Trichomonas vaginalis / Neisseria gonorrhoeae	VBD0496 96	VBD0495 100
RealLine Candida albicans / Gardnerella vaginalis	VBD0444 96	VBD0445 100
Detection in different channels (HEX and ROX), Internal Control in FAM channel		



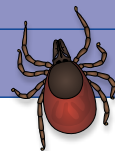
## Human Papilloma Virus

High Carcinogenic Risk Types	Str-format Tests	Fla-format Tests
RealLine HPV 16 / 18	VBD8473 96	VBD8474 100
RealLine HPV HCR Screen	VBD8444 96	VBD8445 100
Detection of the HPV types 16, 18, 31, 33, 35, 39, 45, 51, 52, 56, 58, 59, 66 and 68 in FAM – HEX – ROX channels		
RealLine HPV HCR Genotype	VBD8479 96	VBD8482 99
Differentiation of the HPV types 16, 18, 31, 33, 35, 39, 45, 51, 52, 56, 58 and 59 in FAM – HEX – ROX – Cy5 channels		

Low Carcinogenic Risk Types	Str-format Tests	Fla-format Tests
RealLine HPV 6 / 11	VBD8475 96	VBD8481 100

## Tick Borne Infections

	Str-format Tests	Fla-format Tests
RealLine TBEV (FSME)	VBD1198 48	VBD1199 50
RealLine Borrelia burgdorferi s.l.	VBD1498 48	VBD1499 50
RealLine Anaplasma / Ehrlichia	VBD5398 48	VBD5399 50





## Human Herpes Virus

	Str-format Tests	Fla-format Tests
RealLine HSV1 / HSV2	VBD2195 96	VBD2197 100
RealLine CMV quantitative	VBD1598 96	VBD1596 100
RealLine EBV quantitative	VBD2198 96	VBD2196 100
RealLine HHV-6	VBD2150 48	VBD2151 50
RealLine VZV	VBD2185 48	VBD2187 50

## ... and others

	Uni-format Tests	Str-format Tests	Fla-format Tests
RealLine Rubella	–	VBD2598 48	VBD2596 50
RealLine Helicobacter pylori	–	VBD3798 48	VBD3796 50
RealLine Mycobacterium tuberculosis	–	VBD2399 96	–
RealLine Mycobacterium tuberculosis incl. extraction	VBD2398 48	–	–





## RealLine Pathogen Extraction Kits

	Clinical Material	MagicMag Rack	Nucleic Acid	REF Tests
RealLine DNA Express	epithelial cell specimen, urine, sperm	–	DNA	VBC8899 100
RealLine DNA Extraction 2	epithelial cell specimen, urine, liquor, biopsy material, blood serum, plasma	+	DNA	VBC8897 96
RealLine DNA Extraction 3	epithelial cell specimen, urine, sperm, blood serum, plasma	+	DNA	VBC8889 96
RealLine Extraction 100	epithelial cell specimen, liquor, biopsy material, blood serum, plasma, whole blood, ticks, urine, sperm, stool	+	DNA and RNA	VBC8896 48

The Internal Control is included in the Extraction Kits, but also separately available.

## Accessories

	REF Tests
RealLine Internal Control	VBC8881 250
MagicMag Rack for 12 tubes	BI87000

Unique – available from BIORON only:

The tubes can be kept inside the rack for the whole purifying process due to the built-in tilt mechanism.







## Real-Time PCR Cycler

	Block Size	Number of Channels	REF
RealLine Cycler 48-4	48 wells	4	910484
RealLine Cycler 48-5	48 wells	5	910485
RealLine Cycler 96-4	96 wells	4	910964
RealLine Cycler 96-5	96 wells	5	910965



Our RealLine Pathogen Detection Kits in Str-format are designed for these cyclers. Just open the tube, add the sample and run the PCR!

The block can be opened manually or by software. RealLine Cyclers are open for all kits and compatible to generally available plates and tubes.



### Terms and conditions of BIORON Diagnostics GmbH

- International: The General Conditions of Export
- Germany: Allgemeine Geschäfts- und Lieferbedingungen

Available at [www.bioron.de](http://www.bioron.de)

### Find our products in your country

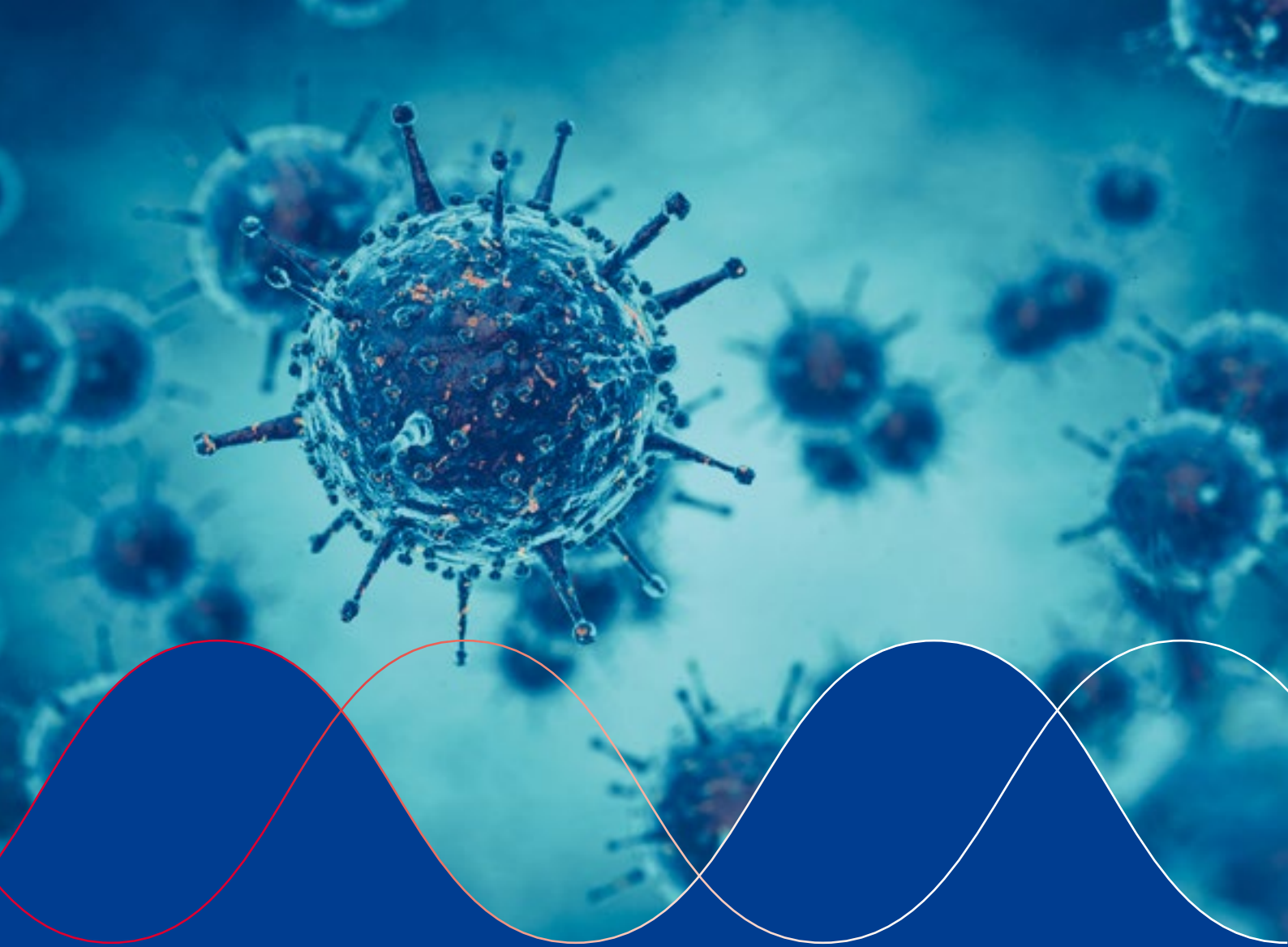
BIORON Diagnostics is represented in various countries worldwide.

Please view [www.bioron.de/index.php/en/distribution/](http://www.bioron.de/index.php/en/distribution/)

### Imprint

BIORON Diagnostics GmbH  
In den Rauhweiden 20  
67354 Römerberg, Germany  
[info@bioron.de](mailto:info@bioron.de)  
[www.bioron.de](http://www.bioron.de)

Legal form: Limited Liability Company  
Managing Director: Barbara Hassib  
Commercial Register: AG Ludwigshafen HRB 02298  
VAT ID: DE 274 094 961



BIORON Diagnostics GmbH is manufacturer and worldwide acting trader of diagnostic products.

RealLine kits are based on

- the most advanced variants of PCR
- fast and sensitive technique

BIORON Diagnostics' kits fulfil highest quality and health standards.

Our customers value us for our individual concern and prompt support.

Our QM-System has been certified by



### **BIORON Diagnostics GmbH**

In den Rauhweiden 20  
67354 Römerberg  
Germany

Phone +49 6232 29844-0  
Fax +49 6232 29844-29  
info@bion.de

[www.bion.de](http://www.bion.de)